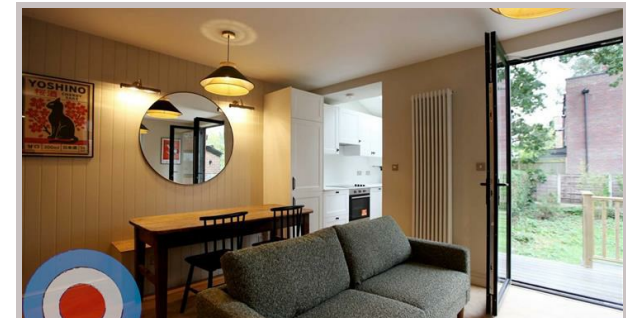




24 Deramore Street  
Manchester  
M14 4DU



# 24 Deramore Street

## £650 Per month

£150pppw  
£165pppw bills included

Launching for 2026, pictures are for illustration purposes, taken off another property with same design/specification.

This stunning 8-bedroom student house in Whitworth Park is just a short walk to the university, with easy access to the city and all local amenities. All eight bedrooms are doubles, with 3 bathrooms, including a fabulous top-floor bathroom flooded with natural light.

The ground floor features French solid oak parquet flooring, exposed brick, and timber cladding, and a British larch clad vaulted ceiling creating a stylish and inviting space. The modern sleek kitchen comes with quartz countertops, while the dining area opens onto a private enclosed courtyard garden, perfect for socialising and relaxing.

All bills included package available and communal cleaning provided throughout the tenancy.

- NO DEPOSIT
- ALL BILLS PACKAGE AVAILABLE
- COMMUNAL CLEANING INCLUDED
- ALL DOUBLE BEDROOMS
- ENERGY EFFICIENT HOUSE C OR ABOVE
- LOCATED IN WHITWORTH PARK

Local Authority  
Manchester

Council Tax Band Exempt

EPC Rating C

Contact

01613992619

hello@welcometomanchesterlettings.com

www.welcometomanchesterlettings.com

